

McNairy County 2006 County Commission Districts and Voting Precincts

- County Commission District
- Voting Precinct
- Roads
 - Interstate
 - Major
 - Local
 - Other
- Other Census Block Boundaries
 - Railroad
 - Powerline, Pipeline
 - Ridgeline, Fenceline
 - Nonvisible Feature
- Water
- Rivers/Lakes
- City, Town
- County
- 1 County Commission District Number
- Name Voting Precinct Name

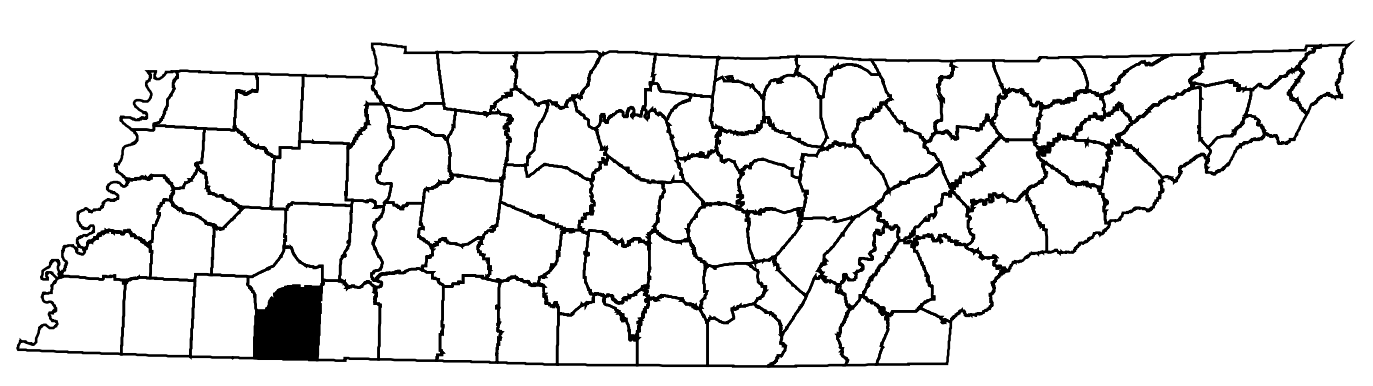
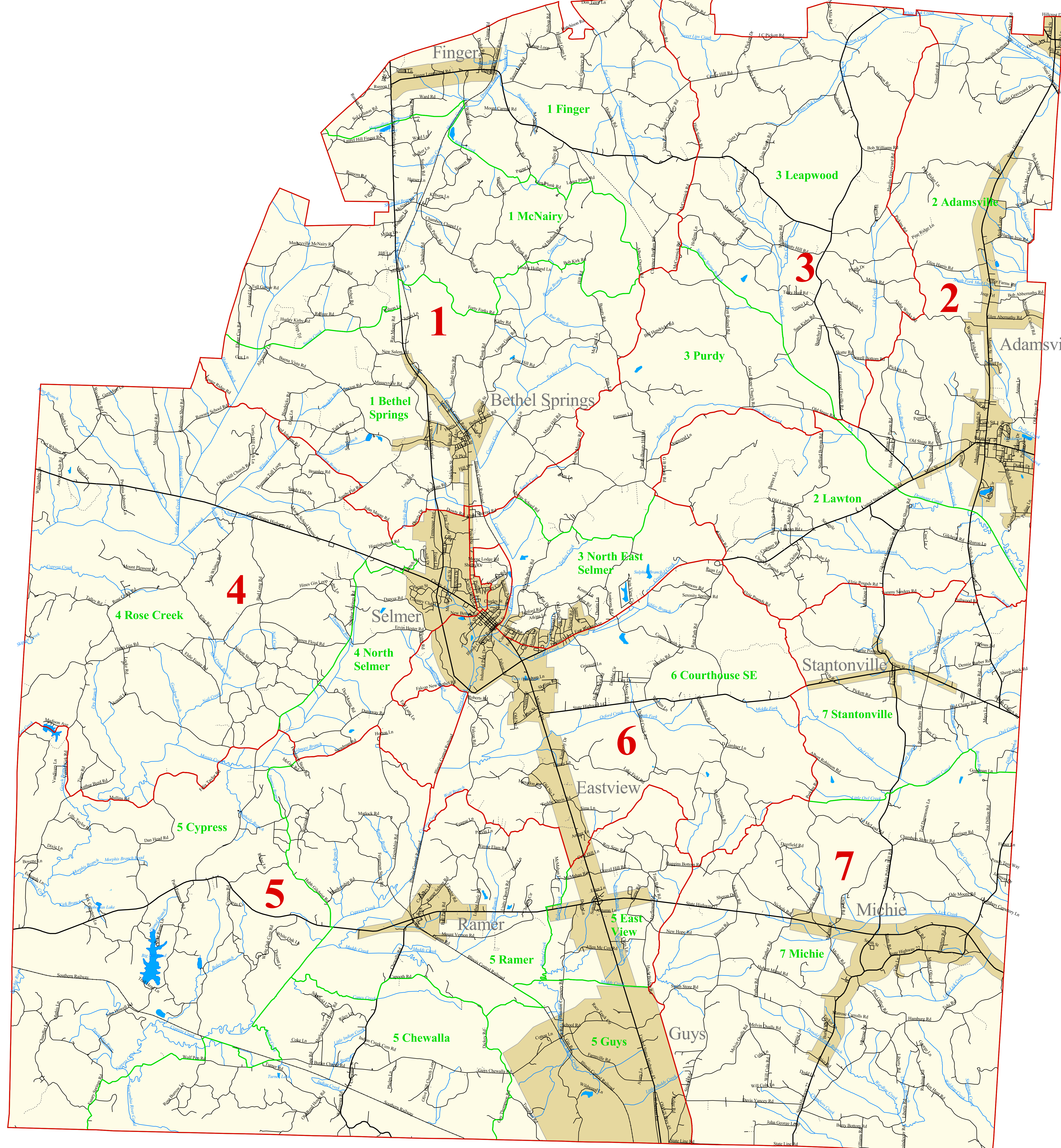
2000 TOTAL POPULATION = 24,653

2000 Population by District

Ccd	Totalpop	Numcoms	Optpop	Dev	Pct_dev	Bpop	Pct_bpop
1	3689	3	3522	167	4.7	124	3.4
2	3575	3	3522	53	1.5	87	2.4
3	3691	3	3522	169	4.8	472	12.8
4	3457	3	3522	-65	-1.8	142	4.1
5	3356	3	3522	-166	-4.7	291	8.7
6	3399	3	3522	-123	-3.5	325	9.6
7	3486	3	3522	-36	-1.0	96	2.8

2000 Population by Precinct

Vtd	Name	Totalpop	Whpop	Bpop	Totalpop18	Bpop18
5972	1 Bethel Springs	1613	1475	119	1200	81
5976	5 Chewalla	694	643	46	524	37
5984	5 Cypress	426	425	0	338	0
5992	5 East View	704	668	21	547	19
5996	1 Finger	1056	1023	4	768	2
6000	5 Guys	561	393	161	419	115
6004	2 Lawton	855	777	63	650	47
6008	3 Leapwood	953	927	7	713	3
6012	1 McNairy	1020	1005	1	756	1
6016	7 Michie	2656	2533	95	2057	60
6024	3 North East Selmer	2236	1757	435	1691	286
6028	4 North Selmer	1899	1727	137	1455	91
6032	3 Purdy	502	468	30	392	25
6036	5 Ramer	971	896	63	730	47
6040	4 Rose Creek	1558	1533	5	1146	5
6044	6 Courthouse SE	3399	2991	325	2640	234
6048	7 Stantonville	350	820	1	650	1
6052	2 Adamsville	2720	2673	24	2152	15



STATE OF TENNESSEE
 COMPTROLLER OF THE TREASURY
 OFFICE OF LOCAL GOVERNMENT
 James K. Polk State Office Building
 505 Deaderick Street, Suite 1700
 Nashville, Tennessee 37243-0277
 Phone: (615) 401-7773



This map was printed by the Office of Local Government, a Division of the Office of the Comptroller of the Treasury of the State of Tennessee. This map was generated using digital data obtained from the US Census Bureau.